

VChem next

Programmable Biochemistry Analyzer

Technical Specifications

Human Machine Interface : TOUCH PANEL/KEY BOARD/MOUSE
 Linear measurement range : 0.000 to 3.000 Absorbance Units (A)
 Photometric Accuracy : $\pm 2\%$ or 0.007 whichever is higher, from 0 to 2.0A,
 $\pm 3\%$ from 2.0A to 3.0A
 Drift : <0.003A/hr.
 Optical measurement : Silicon Diode

Filters

Type of filter : Interference
 Wave Length : 340, 405, 450, 505, 546, 578, 630 + 2 Optional
 Half Bandwidth : $\pm 2\text{nm}$
 Filter Selection : By Stepper motor

Flow cell

Type : Stainless steel body & Quartz window
 Flow cell volume : 32 μl
 Sipping Volume : 300 to 1000 μl
 Sipping Mode : Automatic by specially designed Peristaltic Pump
 Cuvette Volume : 500 μl

Temperature of Cuvette / flow cell Block

Method : By Peltier effect
 Temperature : 25° C, 30° C and 37° C
 Light Source : 6V / 10W Tungsten Halogen lamp
 Warm up Time : 90 Sec.
 Display : 7" TFT Display 300 x 930
 Printer : Built in 55 mm, stationary head graphical thermal printer
 Memory : DDR₂ & DRAM 1 GB, Flash 256 MB
 CPU : ARN Cortex A8720 MHz
 Built in Incubator : 2 Place for coagulation reagent
 15 Place for coagulation Cuvette
 9 Place for test tubes

Storage Capacity : 2000 Open tests with 30 QC results/test
 (Normal and Abnormal controls) and
 200000 Patient results with patient ID and
 Graph
Analysis Mode : 1 point, 2 point (Sample blank)
 Fixed time
 Kinetic
 Coagulation
 Concentration calculation : By factor or by standard
 Blanking : Water, Reagent
 Port : 4 USB, LAN RJ45

Power

Wattage : 100 Watts
 Voltage : 110-240 Volts $\pm 10\%$, 50-60 Hz
 Operating Position : On horizontal, flat, rigid and vibration
 free surface

Operating Conditions

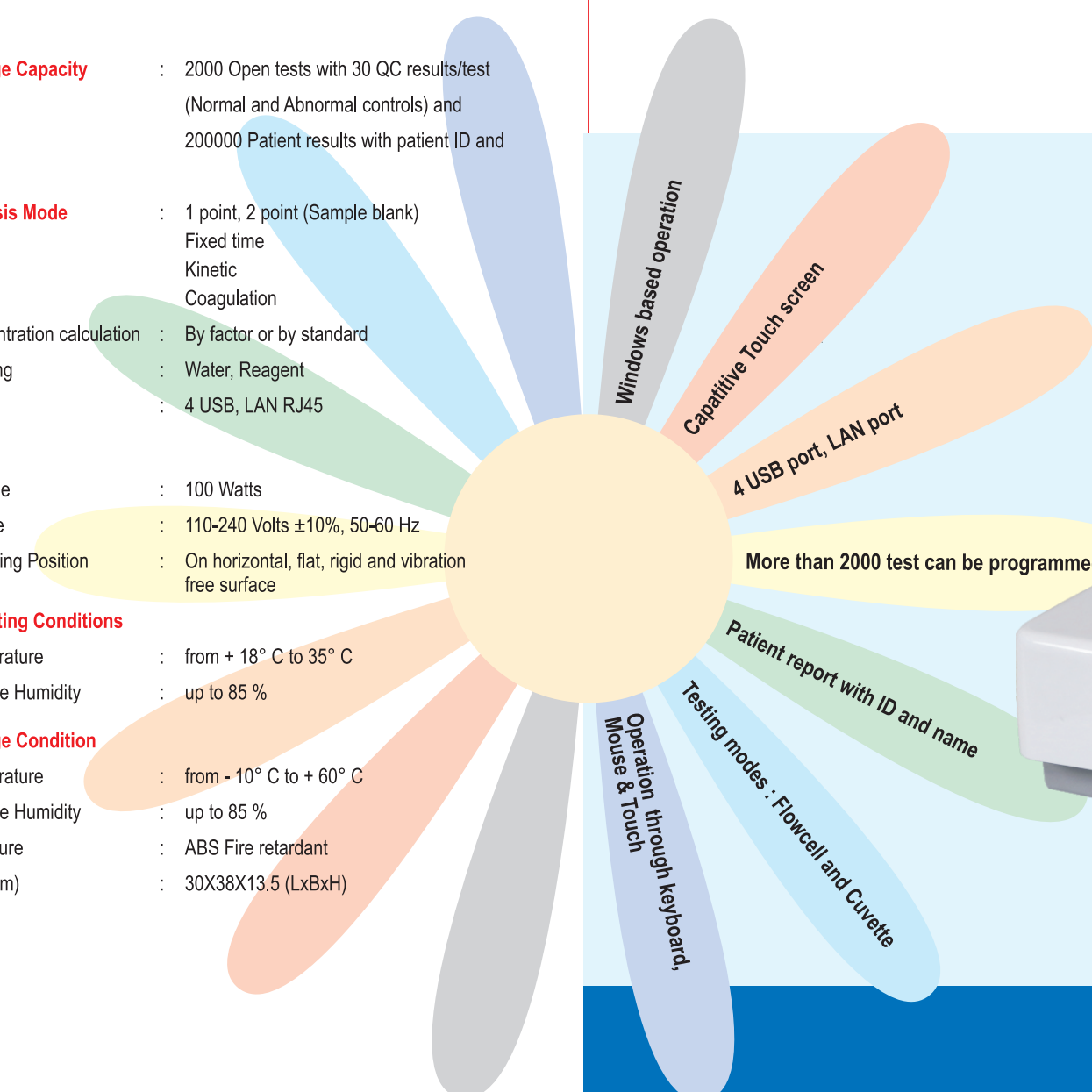
Temperature : from + 18° C to 35° C
 Relative Humidity : up to 85 %

Storage Condition

Temperature : from - 10° C to + 60° C
 Relative Humidity : up to 85 %
 Enclosure : ABS Fire retardant
 Size (cm) : 30X38X13.5 (LxBxH)

VChem next

Programmable Biochemistry Analyzer



Service beyond your imagination

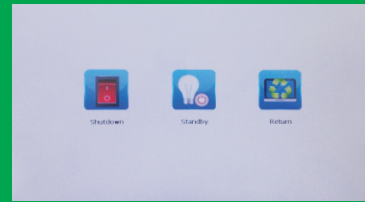
TOLL FREE
1800-270-1027



Exclusively Marketed in India by:
VECTOR BIOTEK PVT. LTD.

Factory & Registered Office : 425, NEW GIDC, KABILPORE, NAVSARI - 396 424, (GUJ.) INDIA
 Toll Free No. : 1800-270-1027, PH. : +91 93757 94103, FAX : +91-2637-265105,
 E-mail : vector@beaconindia.com, Website: www.vectorbiotek.com, CIN No. : U33112GJ2002PTC40978

VBPLMar17/VChemNext/Ver1.3/2000



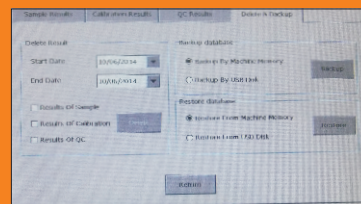
Stand by Menu

- Power saving mode/Stand by /Lamp saving mode
- Programmable stand by time prolonged the life of lamp & TFT display



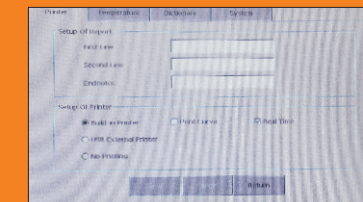
Main Menu

- Advance technology instrument with Windows based operation (cortex A8 720 MHz processor)
- Easy to operate – Touch Panel, External key board & mouse



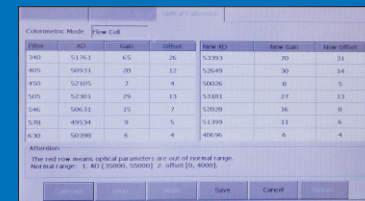
PT / APTT

- PT, APTT test can be performed
- PT- APTT Cuvvetes are provided along with the holder
- Results are 95% correlated with coagulation analyzer



Software / Printer / Backup

- Easy to upgrade software
- System back up can be stored on USB disc or vice versa
- External power supply can increase the life of lamp & electronics
- A comprehensive instrument with built in reporting software
- Built in printer as well as external USB Printer (Windows based)



AD Value Calibration

- More than 3000 hr lamp life
- Easy to replace lamp
- High grade SS Quartz windows flow cell
- Temperature calibration & monitoring through software
- Easy pump calibration
- Auto AD value calibration through software



Online Curve

- Dual cuvette system, Flow cell & micro cuvettes
- Easy to operate & Easy programming
- Self explanatory manuals
- Offers options for selection
- Online curve for all types of chemistry